

# WINGITS®

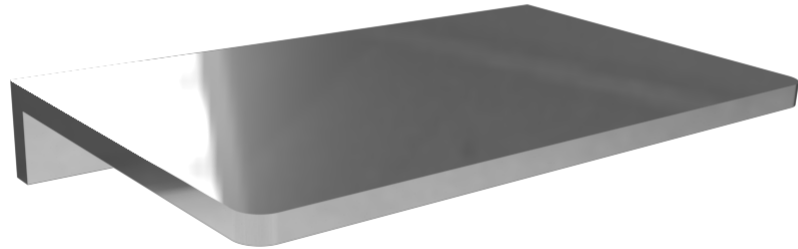
# INFINITE Elegance™

## Stainless Steel Floating Shelf

**Model:**  
**WIEFS**

**Part Numbers:**

<b>WIEFS7PS</b> 7" Polished Finish	<b>WIEFS7SN</b> 7" Satin Finish
<b>WIEFS14PS</b> 14" Polished Finish	<b>WIEFS14SN</b> 14" Satin Finish
<b>WIEFS21PS</b> 21" Polished Finish	<b>WIEFS21SN</b> 21" Satin Finish

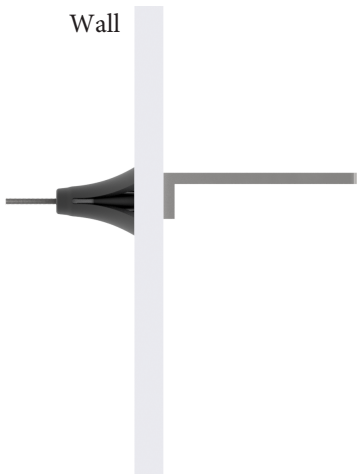


Includes World's  
Strongest Fastener®



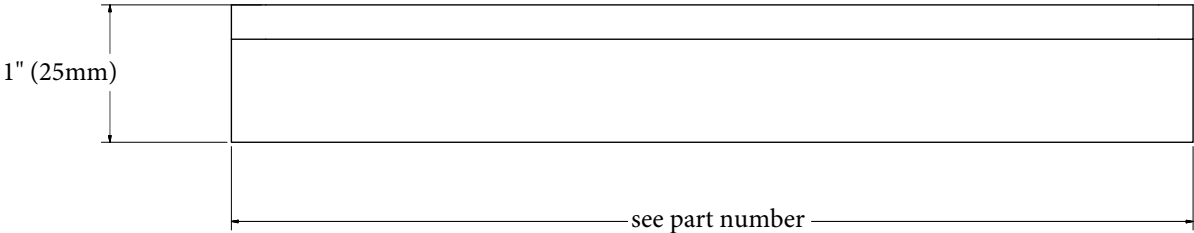
**Features:**

- Hand Polished Stainless Steel
- Beauty, Functionality & Durability
- Unparalleled Strength when Installed with WINGITS® Fasteners - Included



<b>MECHANICAL DATA</b>
<b>Length:</b> see part number
<b>Height:</b> 1" (25mm)
<b>Depth:</b> 4.25" (108mm)
<b>COMPOSITION</b>
18-8 (304) Stainless Steel
<b>INSTALLATION</b>
Includes WINGITS® Fasteners for hollow-wall construction. Includes 3M® VHB Waterproof Tape.
<b>RECOMMENDED INTEGRATION</b>
Install with WINGITS® Fasteners (included) for Structural Waterproof Installation into hollow walls.

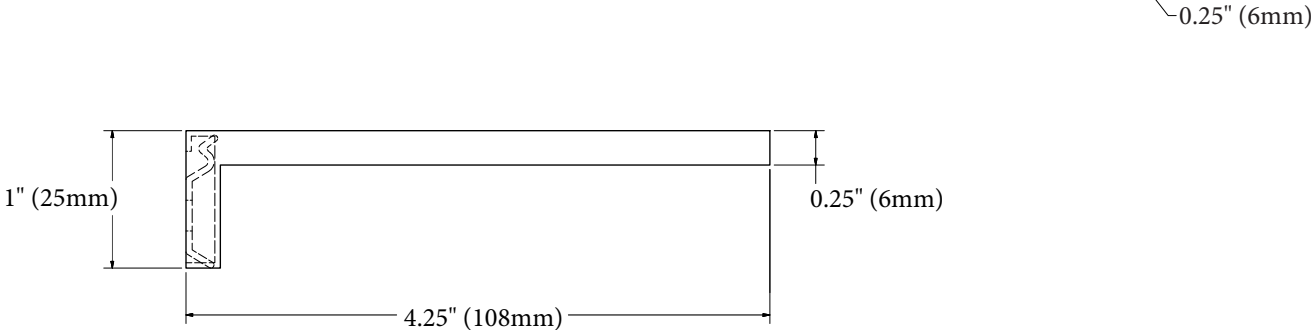
**Front**



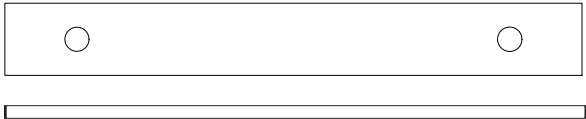
**Top**



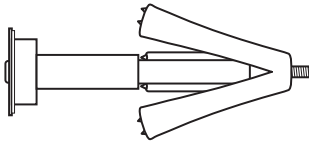
**Side**



**Included Hardware**



3M® VHB Tape Strips



WINGITS® MASTER Anchor (MAW35)  
(2)